



PHILLY FLU FINDINGS

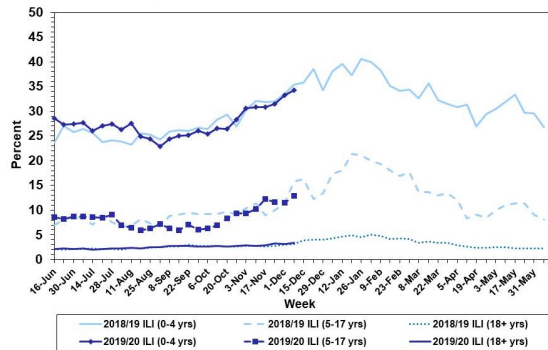
Philadelphia Department of Public Health
 Seasonal Influenza Surveillance Report
 MMWR Week 50: Dec 8—Dec 14, 2019

Philadelphia Influenza Activity

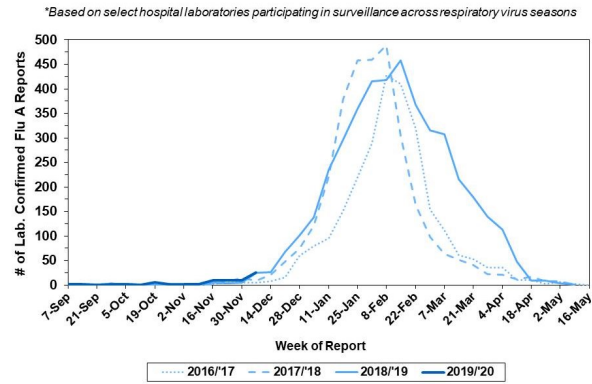
Please note these data are provisional and subject to change.

Febrile/flu-like illnesses increased among all age groups. Seventy-three positive specimens were reported from our sentinel hospital laboratory surveillance for influenza A and B during the same time period among the 6 participating laboratories, a majority of which (48) was influenza B. There were 17 reports of severe influenza (Philadelphia resident, positive by rapid test, PCR or culture, and hospitalized for ≥ 24 hrs) during this time period, with 9 (52%) positive for Influenza B. There was 1 influenza outbreak (≥ 1 case of laboratory confirmed influenza reported in a long term care facility) reported this week, with a total of 2 outbreaks this season. There have not been any influenza-associated deaths.

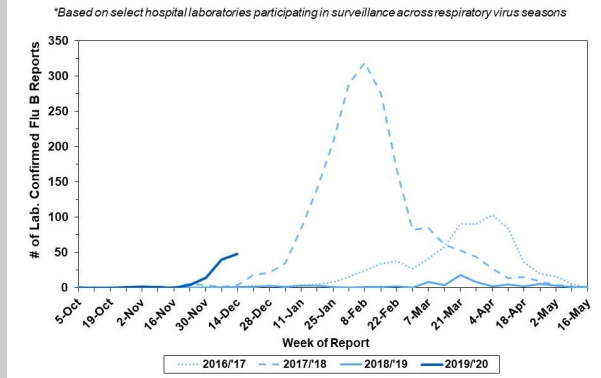
Febrile/Flu-like Illnesses at Philadelphia Emergency Departments, Current Season Compared with Previous Season



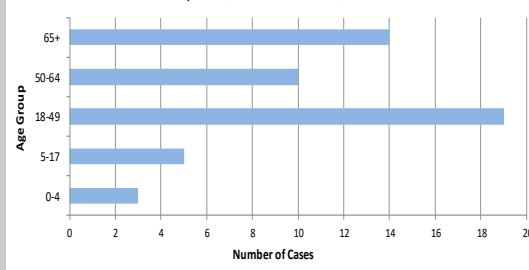
Laboratory-Based Surveillance for Influenza A Philadelphia, 2016/2017 through 2019/2020 Seasons*



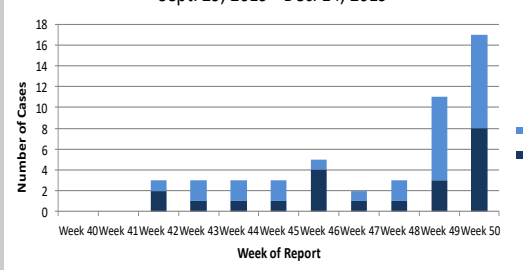
Laboratory-Based Surveillance for Influenza B Philadelphia, 2016/2017 through 2019/2020 Seasons*



Hospitalized Influenza Cases by Age Group
 Sept. 29, 2019 - Dec. 14, 2019



Weekly Counts of Hospitalizations by Influenza Type
 Sept. 29, 2019 - Dec. 14, 2019



Pennsylvania

The Pennsylvania Department of Health (PAOH) has reported widespread influenza activity throughout the state, with flu activity increasing in all regions. Of the 6,938 laboratory confirmed cases of influenza (positive by rapid test, PCR, or culture), 5,237 (75.4%) have been identified as influenza B and 1,378 (19.8%) as influenza A. 7 influenza-associated deaths have been reported thus far this season. For more information, please visit: <https://www.health.pa.gov/topics/disease/Flu/Pages/2019-20-Flu.aspx>

United States

Widespread activity has increased to 30 states from 23, with higher ILI-activity in Southern states. The majority of specimens tested in clinical laboratories since week 40 have been positive for influenza B (3,780, 68.5%). CDC has antigenically characterized 25 B/Victoria and 42 A(H1N1) influenza viruses and has found that 19 (76%) of B/Victoria and 42 (100%) of A(H1N1) viruses were antigenically similar to the cell-grown reference viruses in the current vaccine. Almost all (>99%) tested viruses show susceptibility to oseltamivir, zanamivir, baloxavir and peramivir. For more information, please visit: <https://www.cdc.gov/flu/weekly/index.htm>

All institutional outbreaks and hospitalized and fatal cases of influenza are to be reported to PDPH.

Phone: (215) 685-6742 Fax: (215) 238-6947 Email: ACD@phila.gov Reporting requirements and forms are posted online at hip.phila.gov