



PHILLY FLU FINDINGS

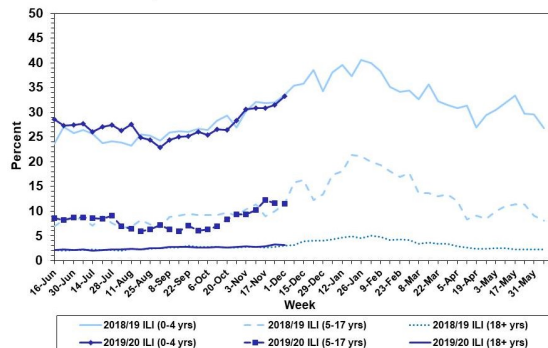
Philadelphia Department of Public Health
 Seasonal Influenza Surveillance Report
 MMWR Week 49: Dec 1—Dec 7, 2019

Philadelphia Influenza Activity

Please note these data are provisional and subject to change.

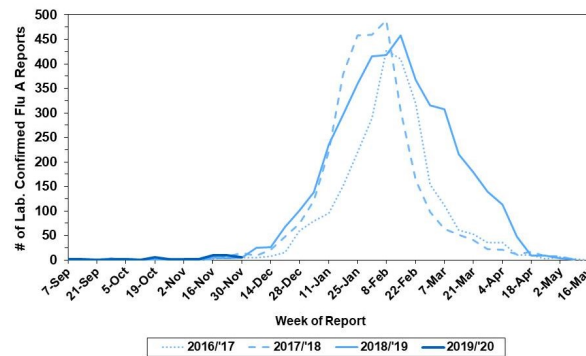
Febrile/flu-like illnesses continued to increase among children ages 0-4 years. Thirty-eight positive specimens were reported from our sentinel hospital laboratory surveillance for influenza A and B during the same time period among the 6 participating laboratories, most of which (31) were influenza B. There were 10 reports of severe influenza (Philadelphia resident, positive by rapid test, PCR or culture, and hospitalized for ≥ 24 hrs.) during this time frame, with 70% positive for influenza B. There were no influenza outbreaks (≥ 1 case of laboratory confirmed influenza reported in a long term care facility) reported this week, with a total of 1 outbreak this season. No influenza-associated deaths have been reported.

Febrile/Flu-like Illnesses at Philadelphia Emergency Departments, Current Season Compared with Previous Season



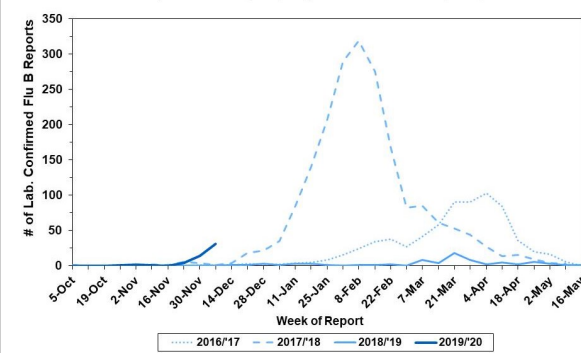
Laboratory-Based Surveillance for Influenza A Philadelphia, 2016/2017 through 2019/2020 Seasons*

*Based on select hospital laboratories participating in surveillance across respiratory virus seasons

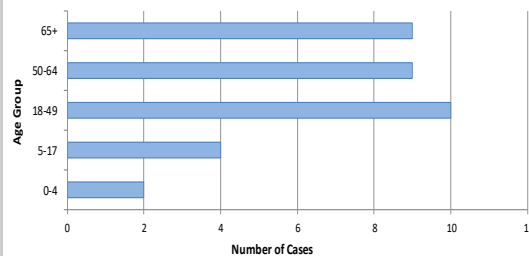


Laboratory-Based Surveillance for Influenza B Philadelphia, 2016/2017 through 2019/2020 Seasons*

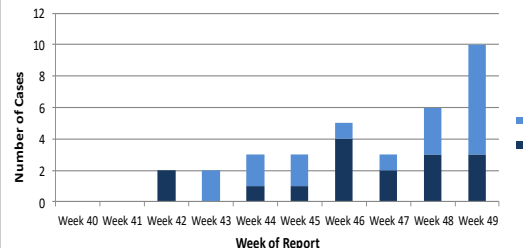
*Based on select hospital laboratories participating in surveillance across respiratory virus seasons



Hospitalized Influenza Cases by Age Group
 Sept. 29, 2019 - Dec. 7, 2019



Weekly Counts of Hospitalizations by Influenza Type
 Sept. 29, 2019 - Dec. 7, 2019



Pennsylvania

The Pennsylvania Department of Health (PADOH) has reported “widespread” influenza activity, which is defined by the CDC as outbreaks of laboratory-confirmed influenza or increases in influenza-like-illness in at least half of the state. From 9/29/19 to 12/07/19, the majority of the 4,424 laboratory confirmed cases of influenza (positive by rapid test, PCR, or culture) has been identified as influenza B (3,285 reports, 74.3%). Six influenza related death have been reported thus far this season. For more information, please visit: <https://www.health.pa.gov/topics/disease/Flu/Pages/2019-20-Flu.aspx>

United States

Widespread activity has increased to 23 states from 16, with higher ILI-activity in Southern states. The majority of specimens tested in clinical laboratories since week 40 have been positive for influenza B (2,353, 68.5%). CDC has antigenically characterized 16 B/Victoria and 18 A(H1N1) viruses and has found that 10 (62.5%) of B/Victoria and 18 (100%) of A(H1N1) viruses were antigenically similar to the cell-grown reference viruses in the current vaccine. Almost all (>99%) tested viruses show susceptibility to oseltamivir, zanamivir, baloxavir and peramivir. For more information, please visit: <https://www.cdc.gov/flu/weekly/index.htm>

All institutional outbreaks and hospitalized and fatal cases of influenza are to be reported to PDPH.

Phone: (215) 685-6742 Fax: (215) 238-6947 Email: ACD@phila.gov Reporting requirements and forms are posted online at hip.phila.gov