



PHILLY FLU FINDINGS

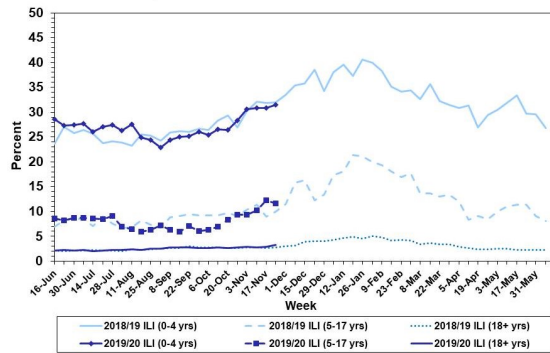
Philadelphia Department of Public Health
 Seasonal Influenza Surveillance Report
 MMWR Week 48: Nov 24—Nov 30, 2019

Philadelphia Influenza Activity

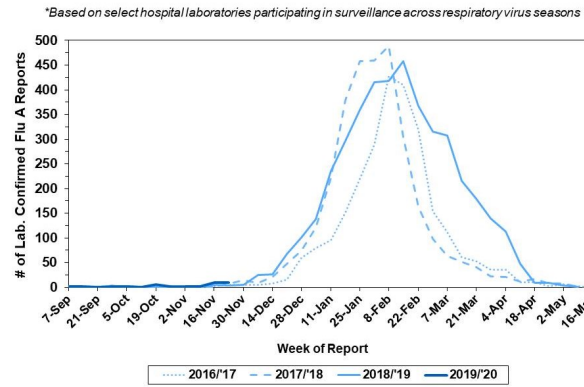
Please note these data are provisional and subject to change.

Febrile/flu-like illnesses have begun their upward climb. Increases were observed among adults and children 0-4 years. Twenty-four positive specimens were reported from our sentinel hospital laboratory surveillance for influenza A and B during the same time period among the 6 participating laboratories. There were 3 reports of severe influenza (Philadelphia resident, positive by rapid test, PCR or culture, and hospitalized for ≥ 24 hrs.) during this time frame. There were no influenza outbreaks (≥ 1 case of laboratory confirmed influenza reported in a long term care facility) reported this week. There have been a total of 3 influenza outbreaks this season. No influenza-associated deaths have been reported thus far this season.

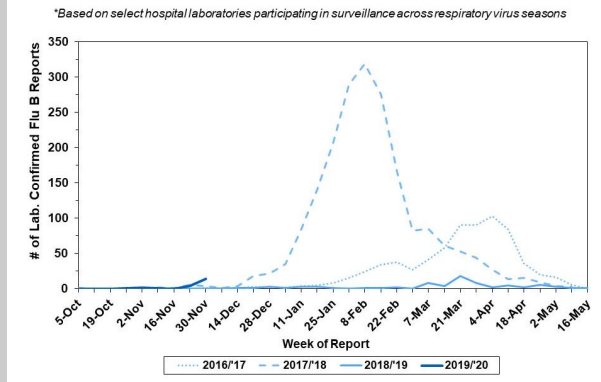
Febrile/Flu-like Illnesses at Philadelphia Emergency Departments, Current Season Compared with Previous Season



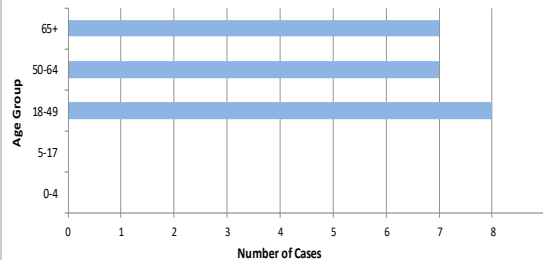
Laboratory-Based Surveillance for Influenza A Philadelphia, 2016/2017 through 2019/2020 Seasons*



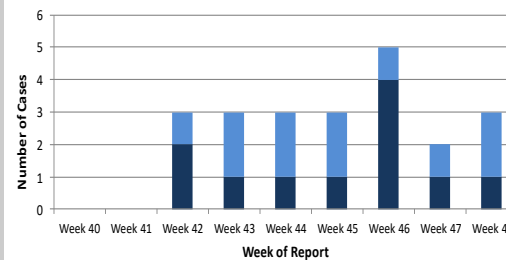
Laboratory-Based Surveillance for Influenza B Philadelphia, 2016/2017 through 2019/2020 Seasons*



Hospitalized Influenza Cases by Age Group
 Sept. 29, 2019 - Nov. 30, 2019



Weekly Counts of Hospitalizations by Influenza Type
 Sept. 29, 2019 - Nov. 30, 2019



Pennsylvania

The Pennsylvania Department of Health (PADOH) has reported “widespread” influenza activity, which is defined by the CDC as outbreaks of laboratory-confirmed influenza or increases in influenza-like-illness in at least half of the state. From 9/29/19 to 11/30/19, there have been 2667 laboratory confirmed cases of influenza (positive by rapid test, PCR, or culture). The majority of influenza throughout the state has been identified as influenza B (1862 reports, 69.8%). Five influenza related deaths have been reported thus far this season. For more information, please visit: <https://www.health.pa.gov/topics/disease/Flu/Pages/2019-20-Flu.aspx>

United States

Widespread Influenza activity increased to 16 states for week 48, with higher ILI-activity in Southern states. The majority of specimens tested in clinical laboratories since week 40 have been positive for influenza B (242, 62.2%), with 96.7% of the B/Victoria lineage, which is unusual for this time in the season. CDC has antigenically characterized 16 Influenza B viruses and has found that 10 were antigenically similar to the cell-grown reference viruses in the current vaccine. All viruses tested since September 29, 2019 show susceptibility to oseltamivir, zanamivir, baloxavir and peramivir. For more information, please visit: <https://www.cdc.gov/flu/weekly/index.htm>

All institutional outbreaks and hospitalized and fatal cases of influenza are to be reported to PDPH.

Phone: (215) 685-6742 Fax: (215) 238-6947 Email: ACD@phila.gov Reporting requirements and forms are posted online at hip.phila.gov