



# PHILLY FLU FINDINGS

Philadelphia Department of Public Health  
 Seasonal Influenza Surveillance Report  
 MMWR Week 17: April 23-29, 2017

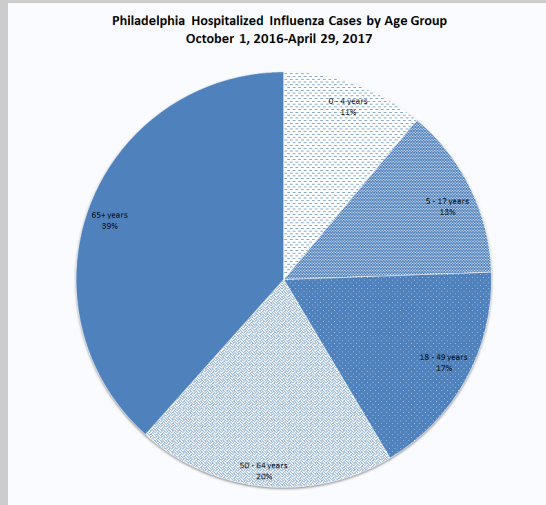
## Philadelphia Influenza Activity

Please note these data are provisional and subject to change.

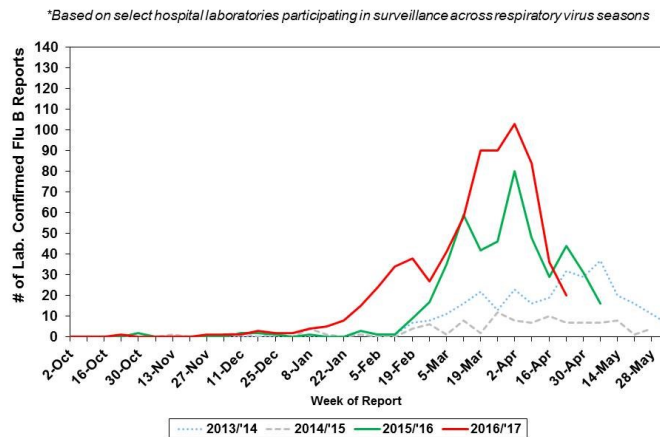
There were 13 cases of severe influenza (Philadelphia resident, positive by rapid test, PCR or culture, and hospitalized for ≥ 24 hrs.) in Philadelphia during week 17. Influenza A activity has reached baseline levels (data not shown). Influenza B activity has declined for the past three weeks. Influenza-like illnesses (ILI) at emergency departments declined for week 17 while ILI at pediatric ambulatory clinics remained unchanged for week 17. There have been a total of 30 outbreaks (≥ 1 case of laboratory confirmed influenza) in long-term care facilities for the 2016-2017 season. Eighteen influenza-associated deaths have been reported for the season. No pediatric influenza-associated deaths have been reported.

Surveillance type	Compared to week of 4/16-4/22	Compared to 3-yr seasonal mean
Hospital ED Fever/flu visits	↓	↓
Pediatric Clinics ILI	—	↓
Laboratory Influenza Surveillance	↓	↓

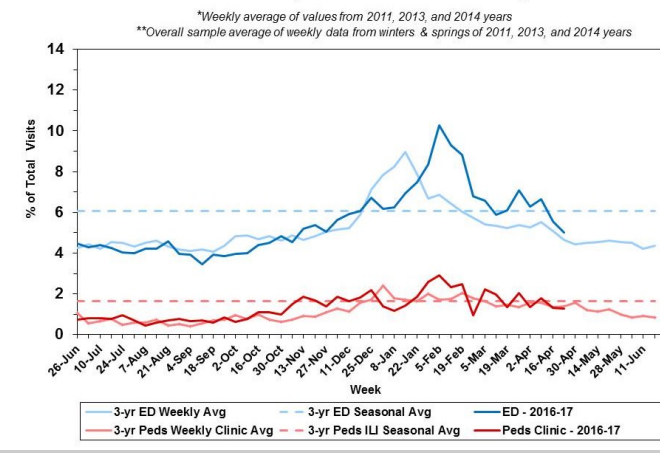
- ↑ = above 10 % of comparison group
- = equivalent to comparison group (-10% to +10%)
- ↓ = below 10 % of comparison group



## Laboratory-Based Surveillance for Influenza B Philadelphia, 2013/2014 through 2016/2017 Seasons\*



## Influenza-like Illness at Philadelphia Emergency Departments and Pediatric Ambulatory Clinics, 2016-17 Data Compared to 3-Year Historical Weekly\* and Seasonal\*\* Averages



## Pennsylvania

Flu activity has peaked and continues to decline for week 17. The flu activity code is "local." The highest flu activity was reported in the southeast region of the state. From 10/02/16 to 4/29/17, there were 69,872 flu cases (positive by rapid test, PCR, or culture). There were 50,363 (72.1%) Influenza A cases, 19,263 (27.6%) Influenza B cases and 246 (0.3%) unknown cases. 576 cases made up the season-to-date influenza sub-typing results from state public health labs. Influenza A/H3 made up 84.7% of the positive cases followed by Influenza B/Victoria (6.3%), Influenza B (4.5%) and other (4.5%). No influenza-associated deaths were reported this week. The total influenza-associated death count is 141 for the 2016-2017 flu season, including three pediatric influenza-associated deaths.

## United States

Flu activity decreased in the U.S. during week 17. The percentage of respiratory specimens that tested positive for influenza in clinical laboratories decreased. 13,671 specimens were tested at clinical laboratories and 938 (6.9%) specimens tested positive for influenza. 257 (27.4%) specimens tested positive for Influenza A and 681 (72.6%) specimens tested positive for Influenza B. 593 specimens were tested at public health labs and 177 (29.8%) specimens tested positive. Influenza B was the most frequently identified influenza virus that was reported by public health labs. The majority of recently circulating influenza viruses are susceptible to oseltamivir, zanamivir and peramivir. One human infection with a novel Influenza A virus was reported by Texas in week 17. The individual was infected with an Influenza A (H3N2) variant (H3N2v) virus after coming in contact with swine. This is the first H3N2v virus infection detected in the U.S. in 2017. The proportion of deaths due to pneumonia and influenza was below the system-specific epidemic threshold for the National Center for Health Statistics Mortality Surveillance System. Ten influenza-associated pediatric deaths were reported to the CDC during week 17, bringing the total count to 92 for the 2016-2017 flu season. Between 10/01/16 and 4/29/17, a cumulative rate of 63.8 laboratory-confirmed influenza-associated hospitalizations per 100,000 population was reported. The proportion of people visiting their health care provider for ILI was 1.4%, which is below the national baseline of 2.2%. Four states experienced low ILI activity. Delaware, New Jersey, Pennsylvania and 43 states experienced minimal ILI activity. Three states reported widespread influenza activity. Eight states, including New Jersey, reported regional influenza activity. Delaware, Pennsylvania and 18 other states reported local influenza activity. Nineteen states reported sporadic activity.

**All institutional outbreaks and hospitalized and fatal cases of influenza are to be reported to PDPH.**

Phone: (215) 685-6742 Fax: (215) 238-6947 Email: ACD@phila.gov Reporting requirements and forms are posted online at [hip.phila.gov](http://hip.phila.gov)