



# PHILLY FLU FINDINGS

Philadelphia Department of Public Health  
 Seasonal Influenza Surveillance Report  
 Week 4: January 22-28, 2017

## Philadelphia Influenza Activity

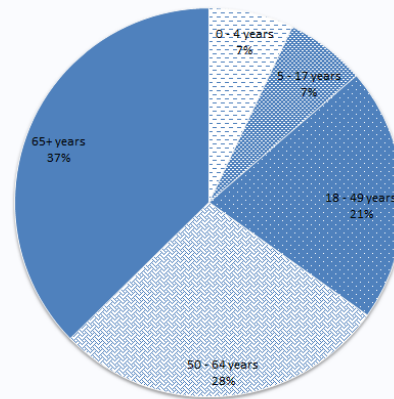
Please note these data are provisional and subject to change.

There were 44 cases of influenza (Philadelphia resident, positive by rapid test, PCR or culture, and hospitalized for ≥ 24 hrs.) in Philadelphia during week 4. Among select hospital laboratories, influenza A percent positivity increased compared with the previous week. Influenza-like illnesses at emergency departments and pediatric ambulatory clinics also increased for week 4. There were 3 influenza outbreaks (≥ 1 case of laboratory confirmed influenza) in long-term care facilities this week, resulting in a total of 12 for the 2016-2017 flu season. There was one influenza-associated death during week 4, bringing the count to 2 for the season.

Surveillance type	Compared to week of 1/15-1/21	Compared to 3-yr seasonal mean
Hospital ED Fever/flu visits	↑	↑
Pediatric Clinics ILI	↑	—
Laboratory Influenza Surveillance	↑	↑

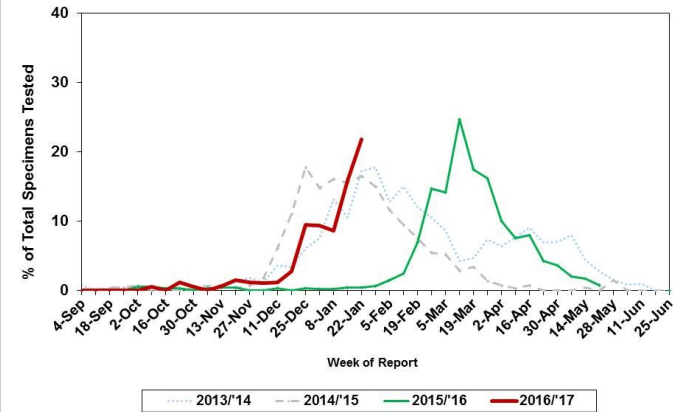
↑ = above 10 % of comparison group  
 — = equivalent to comparison group (-10% to +10%)  
 ↓ = below 10 % of comparison group

Philadelphia Hospitalized Influenza Cases by Age Group  
 September 1, 2016- January 28, 2017



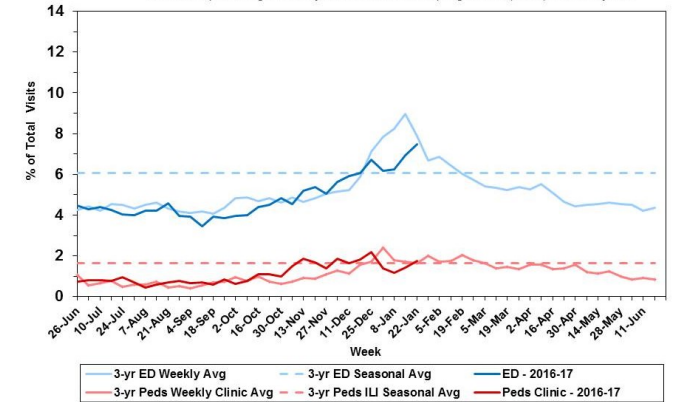
## Laboratory-Based Surveillance for Influenza A (%): Philadelphia, 2013/2014 through 2016/2017 Seasons\*

\*Based on select hospital laboratories participating in surveillance across respiratory virus seasons



## Influenza-like Illness at Philadelphia Emergency Departments and Pediatric Ambulatory Clinics, 2016-17 Data Compared to 3-Year Historical Weekly\* and Seasonal\*\* Averages

\*Weekly average of values from 2011, 2013, and 2014 years  
 \*\*Overall sample average of weekly data from winters & springs of 2011, 2013, and 2014 years



## Pennsylvania

Flu activity is widespread and continues to increase in Pennsylvania for week 4. The highest flu activity was reported in the southeast region of the state. From 10/02/16 to 1/28/17, there were 20,679 flu cases (positive by rapid test, PCR, or culture). There were 17,914 (86.6%) Influenza A cases, 2,671 (12.9%) Influenza B cases and 94 (0.5%) unknown cases. 306 cases made up the season-to-date influenza sub-typing results from state public health labs. Influenza A/H3 made up 86.0% of the positive cases followed by Influenza B/Victoria (7.5%) and other (6.5%). Ten influenza-associated deaths were reported this week bringing the total count to 33 for the 2016-2017 flu season. No pediatric influenza-associated deaths have been reported.

## United States

Flu activity increased in the U.S. during week 4. The percentage of respiratory specimens that tested positive for influenza in clinical laboratories increased. 26,658 specimens were tested at clinical laboratories and 4,786 (18.0%) specimens tested positive for influenza. 4,227 (88.3%) specimens tested positive for Influenza A and 559 (11.7%) specimens tested positive for Influenza B. 2,280 specimens were tested at public health laboratories and 1,327 specimens tested positive. There were 1,239 (93.4%) positive Influenza A specimens and 88(6.6%) positive Influenza B specimens. Influenza A/H3 was the most frequently identified influenza virus that was reported by public health laboratories with 1,239 (93.4%) positive tests. No viruses were resistant to oseltamivir, zanamivir and peramivir. Seven influenza-associated pediatric deaths were reported to CDC during week 4, bringing the total count to 15 for the 2016-2017 flu season. Three deaths were associated with Influenza A and one death was associated with Influenza B. Between October 1, 2016 and January 28, 2017, a rate of 20.3 laboratory-confirmed influenza-associated hospitalizations per 100,000 population was reported. The proportion of people visiting their health care provider for influenza-like illness (ILI) was 3.9%, which is above the national baseline of 2.2%. New York City, New Jersey, Pennsylvania and 13 states experienced high ILI activity. Eleven states experienced moderate ILI activity. Fourteen states experienced low ILI activity. Delaware and 9 states experienced minimal ILI activity. Forty states, including Delaware, New Jersey and Pennsylvania, reported widespread influenza activity. Nine states reported regional influenza activity. Washington, DC and Indiana reported local influenza activity. Delaware had 127 laboratory-confirmed cases of flu. New Jersey had 58 cases of Influenza A/H3N2 and 14 cases of Influenza B.

**All institutional outbreaks and hospitalized and fatal cases of influenza are to be reported to PDPH.**

Phone: (215) 685-6742 Fax: (215) 238-6947 Email: ACD@phila.gov Reporting requirements and forms are posted online at hip.phila.gov