

# DO YOU KNOW YOUR HEPATITIS ABCs?



Hepatitis A is most commonly spread by eating food that was touched by somebody who did not wash their hands after going to the bathroom.

**HEPATITIS**

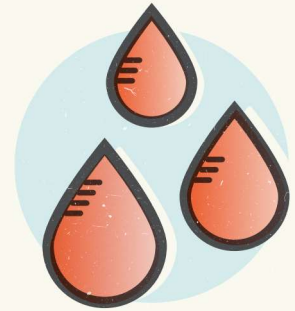
**A**



Hepatitis B is spread when the blood, semen, and/or vaginal fluids of a person infected with hepatitis B enters the body of another person.

**HEPATITIS**

**B**



Hepatitis C is spread when the blood from a person infected with hepatitis C enters the body or mixes with the blood of another person.

**HEPATITIS**

**C**

**GET TESTED  
KNOW THE DIFFERENCE**

[www.PhillyHepatitis.org](http://www.PhillyHepatitis.org)

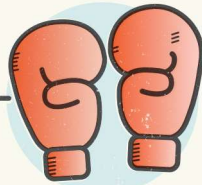
# THERE ARE TWO STAGES OF A HEPATITIS C INFECTION

## ACUTE



Hepatitis C infections are called "acute" during the first six months of infection.

1 out of 3 infected people fight off acute hepatitis C naturally, without medicine.



2 out of 3 people do not fight off the acute infection, so see a doctor if you think you have been exposed to hepatitis C.

## CHRONIC



2 out of 3 people with hepatitis C will develop a chronic infection that can remain in your body for a lifetime if untreated.

Without medical help, a chronic infection can cause serious health issues such as liver cancer and death.



There are new medications that can **CURE** your hepatitis C with almost no side effects.

## GET TESTED KNOW THE DIFFERENCE

[www.PhillyHepatitis.org](http://www.PhillyHepatitis.org)

# IT TAKES TWO TESTS TO SEE IF YOU HAVE HEPATITIS C

## ANTIBODY

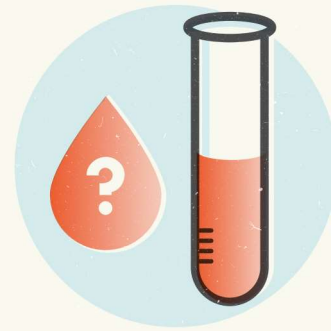


An Antibody test tells you if you have ever been exposed to hepatitis C. It does not show if you are still infected.

A **positive** result means you have been exposed to hepatitis C.

If your Antibody test is positive, a RNA test is needed to see if you still have hepatitis C.

## RNA



A RNA test tells you if you are still infected with hepatitis C.

If you test **positive**, there are new medications that can **CURE** your hepatitis C infection with almost no side effects!

A **negative** RNA test result means you are not currently infected with hepatitis C.

## GET TESTED KNOW THE DIFFERENCE

[www.PhillyHepatitis.org](http://www.PhillyHepatitis.org)