

Philadelphia Department of Public Health Seasonal Influenza Surveillance Report

February 7, 2016— February 13, 2016 (Week 6)

Philadelphia Influenza Activity

Please note these data are provisional and subject to change.

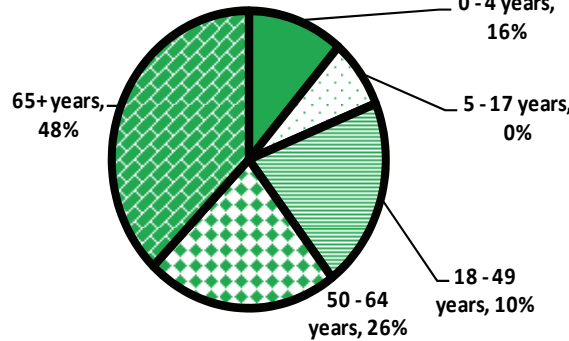
Six hospitalized cases of influenza were reported during week 6. Influenza A has remained the dominant virus this season thus far, as few cases of influenza B have been identified. Influenza-like illness remained steady but low for this time of year, while ILI at pediatric clinics dropped. Reports of laboratory confirmed influenza at local clinical laboratories remain markedly lower compared to historical levels. To date, there have been four influenza outbreaks in long term care facilities. There have been two influenza-associated deaths reported this season, though no deaths were reported for week 6.

Surveillance type	Compared to week of 1/31–2/6	Compared to 3-yr seasonal* mean
Hospital ED Fever/flu visits	—	—
Pediatric Clinics ILI	↓	↓
Laboratory Influenza Surveillance	—	↓

↑ = above 10% of comparison group
 — = equivalent to comparison group (-10% to +10%)
 ↓ = below 10% of comparison group
 * mean of 2010-'11, 2012-'13, and 2013-'14 flu seasons epidemic flu activity time period (late December—early May)

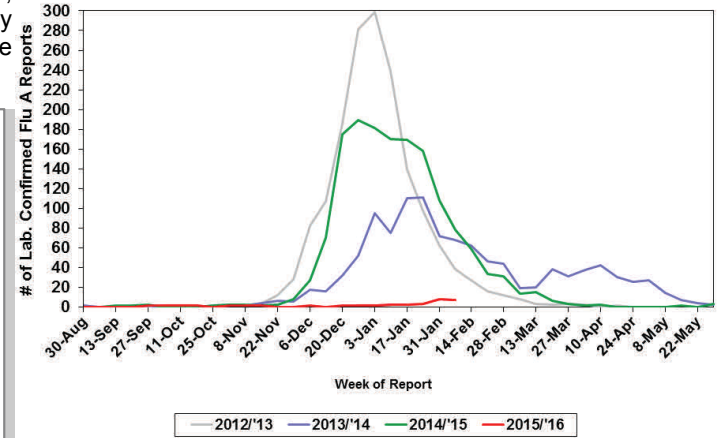
2015- 2016 Philadelphia Hospitalized

Influenza Cases by Age, N = 53



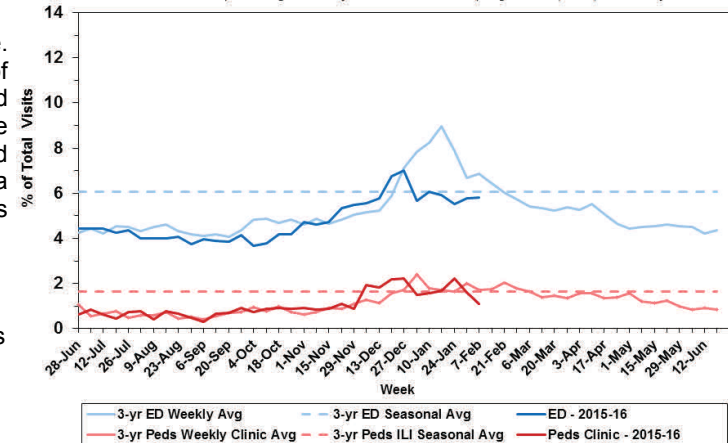
Laboratory-Based Surveillance for Influenza A Philadelphia, 2012/2013 through 2015/2016 Seasons*

*Based on select hospital laboratories participating in surveillance across respiratory virus seasons



Influenza-like Illness at Philadelphia Emergency Departments and Pediatric Ambulatory Clinics, 2015-16 Data Compared to 3-Year Historical Weekly* and Seasonal** Averages

*Weekly average of values from 2011, 2013, and 2014 years
 **Overall sample average of weekly data from winters & springs of 2011, 2013, and 2014 years



Pennsylvania Influenza Activity

Week 6 (February 7, 2016 — February 13, 2016) produced a sharp increase in new influenza cases reported by the state. There were 535 new cases of influenza reported (309 cases were reported the previous week 4). A total of 2179 cases of influenza (positive by any test type) have been reported this season. Laboratory, hospital emergency department, and sentinel medical provider data all indicate a modest increase in influenza activity. The majority of cases (68.61%) have tested positive (via rapid test, PCR, or viral culture) for influenza A. To date, there have been six influenza-associated deaths in Pennsylvania (two inside the Philadelphia city limits), two between the ages 50-64, the other four 65+. Influenza case activity throughout the state is currently being classified as widespread for week 6. Influenza activity remains the highest in the northeastern part of the state.

United States Influenza Activity

Influenza activity continues to increase. The most frequently identified influenza virus type reported by public health laboratories during week 6 was influenza A, with influenza A (H1N1)pdm09 viruses predominating. The proportion of deaths attributed to pneumonia and influenza (P&I) was below their system-specific epidemic threshold in both the NCHS Mortality Surveillance System and the 122 Cities Mortality Reporting System. Two influenza-associated pediatric deaths were reported (13 total this season). A cumulative rate for the season of 4.1 laboratory-confirmed influenza-associated hospitalizations per 100,000 population was reported. The proportion of outpatient visits for influenza-like illness (ILI) was 3.1%, which is above the national baseline of 2.1%. Nine of 10 regions reported ILI at or above region-specific baseline levels. Puerto Rico and two states experienced high ILI activity; New York City and 11 states experienced moderate ILI activity; 6 states experienced low ILI activity; 30 states experienced minimal ILI activity; and the District of Columbia and one state had insufficient data. The geographic spread of influenza in Puerto Rico and 12 states was reported as widespread (PA); 20 states reported regional activity (NJ); the District of Columbia, Guam, and 15 states reported local activity (DE); the U.S. Virgin Islands and three states reported sporadic activity.

All institutional outbreaks, hospitalized and fatal cases of influenza are to be reported to PDPH.

Phone: (215) 685-6742 Fax: (215) 238-6947 Email: ACD@phila.gov

Reporting requirements and forms are posted online at hip.phila.gov