

Philadelphia Department of Public Health Seasonal Influenza Surveillance Report

January 31, 2016— February 6, 2016 (Week 5)

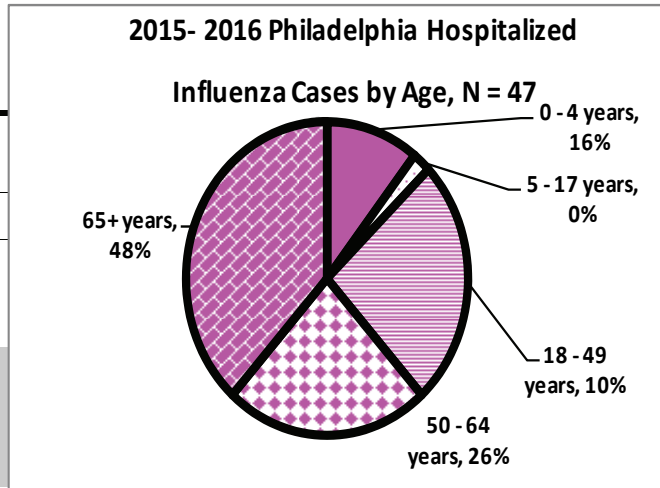
Philadelphia Influenza Activity

Please note these data are provisional and subject to change.

Nine hospitalized cases of influenza were reported during week 5. Influenza A has remained the dominant virus this season thus far, as few cases of influenza B have been identified. Influenza-like illness (ILI) at emergency departments increased slightly while ILI activity at pediatric outpatient clinics marginally declined last week relative to the week previous. Reports of laboratory confirmed influenza at local clinical laboratories remain markedly lower compared to historical levels. To date, there have been three influenza outbreaks in long term care facilities. There were no influenza-associated deaths reported in week 5.

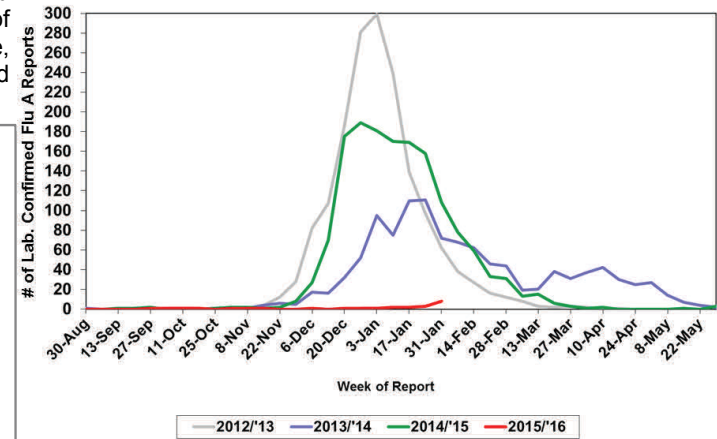
Surveillance type	Compared to week of 1/24–1/30	Compared to 3-yr seasonal* mean
Hospital ED Fever/flu visits	—	—
Pediatric Clinics ILI	↓	—
Laboratory Influenza Surveillance	↑	↓

↑ = above 10% of comparison group
 — = equivalent to comparison group (-10% to +10%)
 ↓ = below 10% of comparison group
 * mean of 2010–'11, 2012–'13, and 2013–'14 flu seasons epidemic flu activity time period (late December—early May)
 N/A— not available (data not reported)



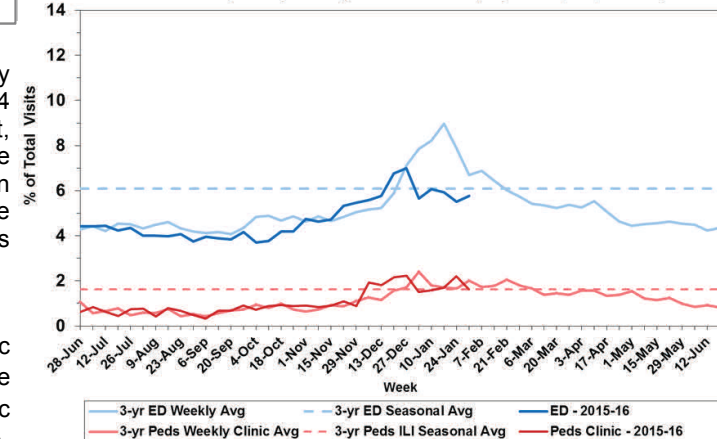
Laboratory-Based Surveillance for Influenza A Philadelphia, 2012/2013 through 2015/2016 Seasons*

*Based on select hospital laboratories participating in surveillance across respiratory virus seasons



Influenza-like Illness at Philadelphia Emergency Departments and Pediatric Ambulatory Clinics, 2015-16 Data compared to 3-Year Historical Weekly* and Seasonal** Averages

*Weekly average of values from 2011, 2013, and 2014 years
 **Overall sample average of weekly data from winters & springs of 2011, 2013, and 2014 years



Pennsylvania Influenza Activity

During week 5 (January 31 — February 6, 2016) there has been a noticeable increase in new influenza cases reported by the state. There were 309 new cases of influenza reported (236 cases were reported the previous week 4). A total of 1644 cases of influenza (positive by any test type) have been reported this season. Laboratory, hospital emergency department, and sentinel medical provider data all indicate a modest increase in influenza activity. The majority of cases (72.6%) have tested positive (via rapid test, PCR, or viral culture) for influenza A. To date, there have been four influenza-associated deaths in Pennsylvania (two inside the Philadelphia city limits), one between the ages 50-64, the other three 65+. Influenza case activity throughout the state is currently being classified as regional. Influenza activity remains the highest in the northeastern part of the state.

United States Influenza Activity

Influenza activity increased slightly during week 5. The most frequently identified influenza virus type reported by public health laboratories during week 5 was influenza A, with influenza A (H1N1) pdm09 viruses predominating. The percentage of respiratory specimens testing positive for influenza in clinical laboratories increased. Two influenza-associated pediatric deaths were reported (11 total this season). A cumulative rate for the season of 3.2 laboratory-confirmed influenza-associated hospitalizations per 100,000 population was reported. The proportion of outpatient visits for influenza-like illness (ILI) was 2.4%, which is above the national baseline of 2.1%. Seven of 10 regions reported ILI at or above region-specific baseline levels. The geographic spread of influenza in Puerto Rico and seven states was reported as widespread; Guam and 17 states reported regional activity (Pennsylvania and New Jersey); 16 states reported local activity; the District of Columbia and 9 states reported sporadic activity (Delaware); one state reported no activity; and the U.S. Virgin Islands did not report.

All institutional outbreaks, hospitalized and fatal cases of influenza are to be reported to PDPH.

Phone: (215) 685-6742 Fax: (215) 238-6947 Email: ACD@phila.gov

Reporting requirements and forms are posted online at hip.phila.gov