

Philadelphia Department of Public Health Seasonal Influenza Surveillance Report

January 24, 2016— January 30, 2016 (Week 4)

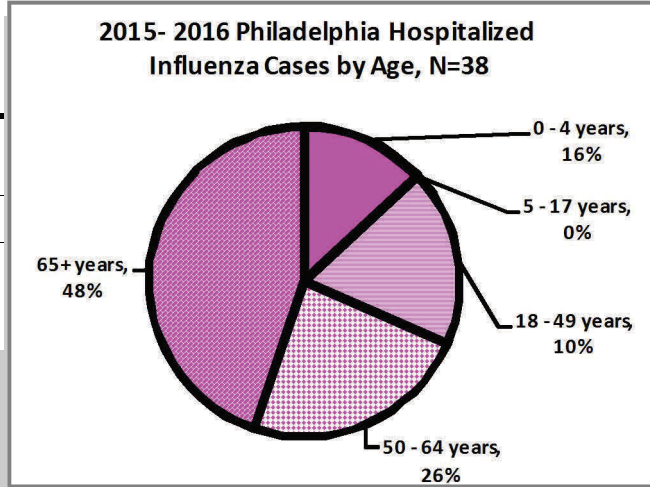
Philadelphia Influenza Activity

Please note these data are provisional and subject to change.

Seven hospitalized cases of influenza were reported during week 4. Influenza A has remained the dominant virus this season thus far, as few cases of influenza B have been identified. Influenza-like illness (ILI) at emergency departments declined slightly while ILI activity at pediatric outpatient clinics increased last week relative to the week previous. Reports of laboratory confirmed influenza at local clinical laboratories remain markedly lower compared to historical levels. To date, there have been three influenza outbreaks in long term care facilities. One influenza-associated death of a Philadelphia resident was reported in week 4.

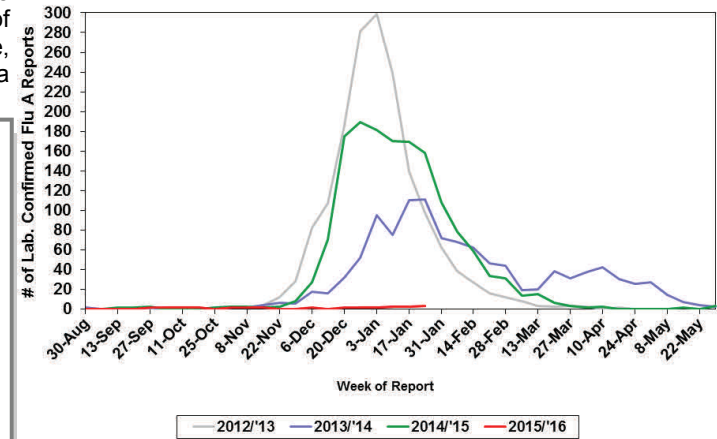
Surveillance type	Compared to week of 1/17–1/23	Compared to 3-yr seasonal* mean
Hospital ED Fever/flu visits	—	—
Pediatric Clinics ILI	↑	—
Laboratory Influenza Surveillance	↑	↓

↑ = above 10% of comparison group
 — = equivalent to comparison group (-10% to +10%)
 ↓ = below 10% of comparison group
 * mean of 2010-'11, 2012-'13, and 2013-'14 flu seasons epidemic flu activity time period (late December—early May)
 N/A— not available (data not reported)



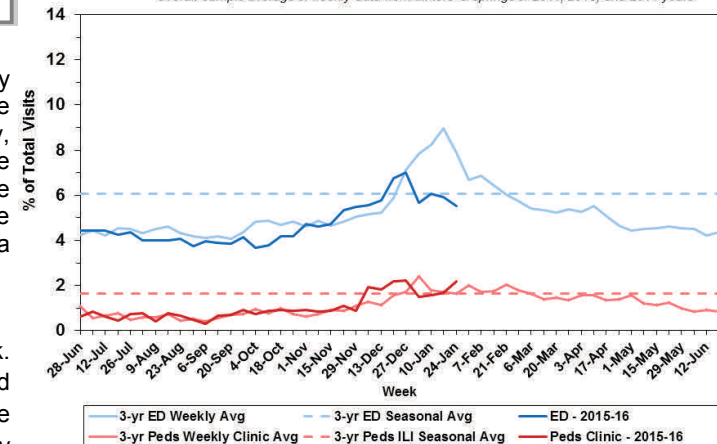
Laboratory-Based Surveillance for Influenza A Philadelphia, 2012/2013 through 2015/2016 Seasons*

*Based on select hospital laboratories participating in surveillance across respiratory virus seasons



Influenza-like Illness at Philadelphia Emergency Departments and Pediatric Ambulatory Clinics, 2015-16 Data compared to 3-Year Historical Weekly* and Seasonal** Averages

*Weekly average of values from 2011, 2013, and 2014 years
 **Overall sample average of weekly data from winters & springs of 2011, 2013, and 2014 years



Pennsylvania Influenza Activity

During week 4 (January 24 — January 30, 2016) new influenza cases reported by the state, have remained relatively consistent from the previous week 3. There were 236 new cases of influenza reported (212 cases were reported the previous week). A total of 1335 cases of influenza (positive by any test type) have been reported this season. Laboratory, hospital emergency department, and sentinel medical provider data all indicate a modest increase in influenza activity. The majority of cases (71.42%) have tested positive (via rapid test, PCR, or viral culture) for influenza A. To date, there have been four influenza-associated deaths in Pennsylvania (two inside the Philadelphia city limits), one between the ages 50-64, the other three 65+. Influenza case activity throughout the state is currently being classified as local. For the second week in a row, influenza activity remains the highest in the northeastern part of the state.

United States Influenza Activity

Nationally, the number of hospitalized influenza cases increased in week 4 compared to the previous reporting week. Influenza A remained the most frequently identified virus type reported by public health laboratories across the United States, with influenza A (H1N1)pmd09 as the predominant strain. The percentage of respiratory specimens testing positive for influenza in clinical laboratories increased. Both the NCHS Mortality Surveillance System and the 122 Cities Mortality Reporting System reported the proportion of pneumonia and influenza attributed deaths at levels below their system-specific epidemic thresholds. Two influenza-associated pediatric deaths were reported to CDC in week 4, with a total of 9 pediatric deaths reported since October 4, 2015. For the season, a cumulative rate of 2.6 laboratory-confirmed influenza-associated hospitalizations per 100,000 population was reported. The proportion of outpatient visits for ILI was 2.2%, which is above the national baseline of 2.1%. The majority of states reported minimal ILI activity during week 4. Two states saw moderate activity, and Puerto Rico experienced high ILI activity.

All institutional outbreaks, hospitalized and fatal cases of influenza are to be reported to PDPH.

Phone: (215) 685-6742 Fax: (215) 238-6947 Email: ACD@phila.gov

Reporting requirements and forms are posted online at hip.phila.gov