

Philadelphia Department of Public Health Seasonal Influenza Surveillance Report

January 10, 2016— January 16, 2016 (Week 2)

Philadelphia Influenza Activity

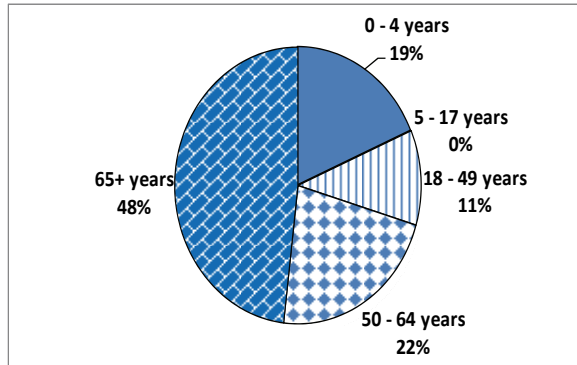
Please note these data are provisional and subject to change.

For week 2, seven hospitalized cases of influenza were reported. Influenza A has remained the dominant virus this season thus far, as few cases of influenza B have been identified. Influenza-like illness at emergency departments and pediatric outpatient clinics remained largely unchanged last week relative to the week previous. Reports of laboratory confirmed influenza at local clinical laboratories remain markedly lower compared to historical levels. To date, there have been two flu outbreaks in long term care facilities and week 2 produced one influenza-associated death.

| Surveillance type | Compared to week of 1/3–1/9 | Compared to 3-yr seasonal* mean |
|-----------------------------------|-----------------------------|---------------------------------|
| Hospital ED Fever/flu visits | — | — |
| Pediatric Clinics ILI | — | — |
| Laboratory Influenza Surveillance | ↑ | ↓ |

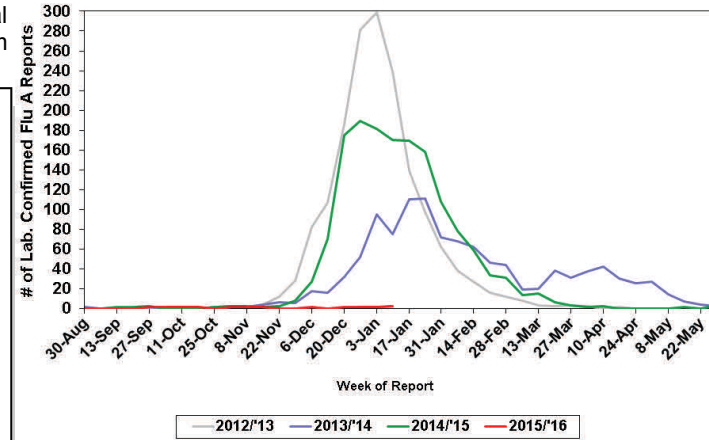
↑ = above 10% of comparison group
 — = equivalent to comparison group (-10% to +10%)
 ↓ = below 10% of comparison group
 * mean of 2010-11, 2012-13, and 2013-14 flu seasons epidemic flu activity time period (late December—early May)
 N/A— not available (data not reported)

Philadelphia Hospitalized Influenza Cases 2015-2016



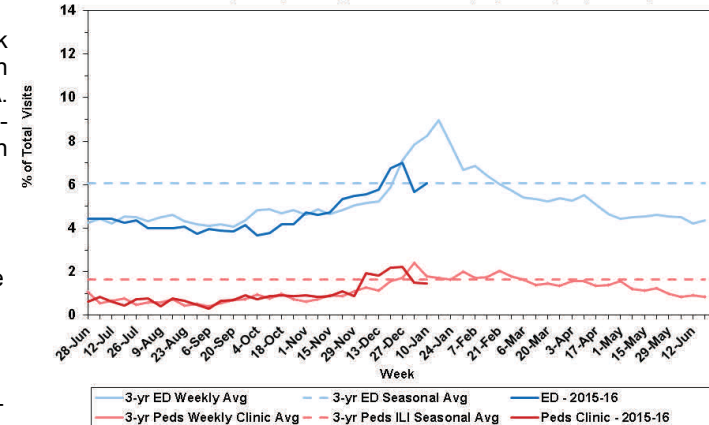
Laboratory-Based Surveillance for Influenza A Philadelphia, 2012/2013 through 2015/2016 Seasons*

*Based on select hospital laboratories participating in surveillance across respiratory virus seasons



Influenza-like Illness at Philadelphia Emergency Departments and Pediatric Ambulatory Clinics, 2015-16 Data compared to 3-Year Historical Weekly* and Seasonal** Averages

*Weekly average of values from 2011, 2013, and 2014 years
 **Overall sample average of weekly data from winters & springs of 2011, 2013, and 2014 years



Pennsylvania Influenza Activity

Week 2 (January 10 — January 16, 2016) yielded a decline in new influenza cases reported to the state from the previous week 1. There were 124 new cases of influenza reported. A total of 887 cases of influenza (positive by any test type) have been reported this season. The majority of cases (69.69%) have tested positive (via rapid test, PCR, or viral culture) for influenza A. To date, there have been three influenza-associated deaths in Pennsylvania (outside of Philadelphia), one between the ages 50-64, the other two 65+. Case activity throughout the state is classified as regional with activity being increased predominately in southeastern Pennsylvania.

United States Influenza Activity

Week 2, influenza case count slightly increased across the United States. The most frequently identified influenza virus type reported by public health laboratories during week 2 was influenza A, with influenza A (H1N1)pdm09 viruses predominating. The percentage of respiratory specimens testing positive for influenza in clinical laboratories increased. The proportion of deaths attributed to pneumonia and influenza (P&I) was below the system-specific epidemic threshold in the NCHS Mortality Surveillance System and above the system-specific epidemic threshold in the 122 Cities Mortality Reporting System. No influenza-associated pediatric deaths were reported (A total of 7 this season). A cumulative rate for the season of 1.8 laboratory-confirmed influenza-associated hospitalizations per 100,000 population was reported. The proportion of outpatient visits for influenza-like illness (ILI) was 2.1%, which is at the national baseline of 2.1%. Six of 10 regions reported ILI at or above region-specific baseline levels. Puerto Rico experienced high ILI activity; three states experienced moderate ILI activity; New York City and four states experienced low ILI activity (New Jersey included); 43 states experienced minimal ILI activity (Delaware and Pen; and the District of Columbia had insufficient data. The geographic spread of influenza in three states was reported as widespread; Puerto Rico and 10 states reported regional activity; Guam and 12 states reported local activity; the U.S. Virgin Islands and 24 states reported sporadic activity; and the District of Columbia and one state reported no influenza activity.

All institutional outbreaks, hospitalized and fatal cases of influenza are to be reported to PDPH.

Phone: (215) 685-6742 Fax: (215) 238-6947 Email: ACD@phila.gov

Reporting requirements and forms are posted online at hip.phila.gov