



# PHILLY FLU FINDINGS

Philadelphia Department of Public Health  
 Seasonal Influenza Surveillance Report  
 Week 52: December 25-31 2016

## Philadelphia Influenza Activity

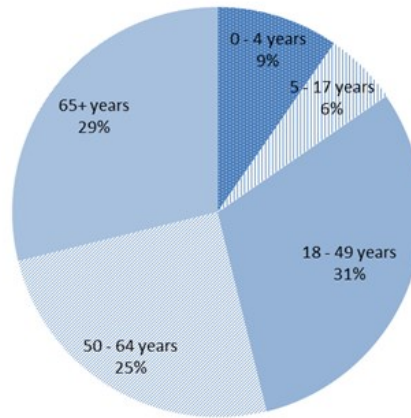
Please note these data are provisional and subject to change.

There were 27 cases of influenza (Philadelphia resident, positive by rapid test, PCR or culture, and hospitalized for ≥ 24 hrs.) in Philadelphia during week 52, a substantial increase from the previous week. 57 laboratory-confirmed influenza illnesses were reported last week among select hospital laboratories, a large increase from the previous week. Influenza-like illnesses at emergency departments and pediatric ambulatory clinics also increased for week 52. No influenza deaths have been reported this season. There were 3 influenza outbreaks (≥ 1 case of laboratory confirmed influenza) in long-term care facilities this week bringing the total count to 5 for the 2016-2017 flu season.

Surveillance type	Compared to week of 12/18–12/24	Compared to 3-yr seasonal mean
Hospital ED Fever/flu visits	↑	↑
Pediatric Clinics ILI	↑	↑
Laboratory Influenza Surveillance	↑	—

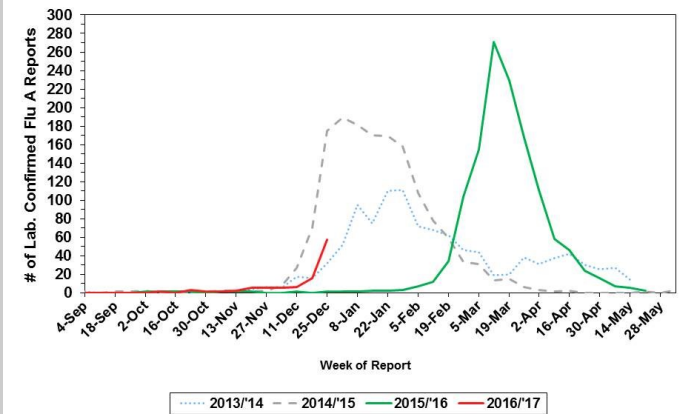
↑ = above 10 % of comparison group  
 — = equivalent to comparison group (-10% to +10%)  
 ↓ = below 10 % of comparison group

Philadelphia Hospitalized Influenza Cases by Age Group  
 September 1, 2016 - December 31, 2016



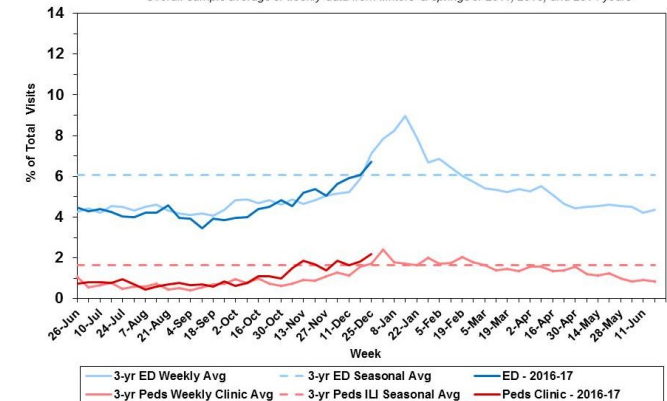
## Laboratory-Based Surveillance for Influenza A Philadelphia, 2013/2014 through 2016/2017 Seasons\*

\*Based on select hospital laboratories participating in surveillance across respiratory virus seasons



## Influenza-like Illness at Philadelphia Emergency Departments and Pediatric Ambulatory Clinics, 2016-17 Data Compared to 3-Year Historical Weekly\* and Seasonal\*\* Averages

\*Weekly average of values from 2011, 2013, and 2014 years  
 \*\*Overall sample average of weekly data from winters & springs of 2011, 2013, and 2014 years



## Pennsylvania

Pennsylvania's flu activity is widespread and continues to increase during week 52. The highest flu activity was reported in the southwest region. From 10/02/16 to 12/31/16, there were 4,546 flu cases (positive by rapid test, PCR, or culture). There were 3,907 (85.9%) Influenza A cases, 621 (13.7%) Influenza B cases, and 18 (0.4%) unknown cases. 147 cases comprised the season-to-date influenza sub-typing results from state public health labs. Influenza A/H3 made up 85.0% of the total cases followed by Influenza B/Victoria (11.6%) and other (3.4%). 5 flu influenza associated deaths were reported this week, totaling the influenza associated death count to 9 for the 2016-2017 flu season. No pediatric influenza associated deaths have been reported for the current season.

## United States

Flu activity increased in the U.S. during week 52. The percentage of respiratory specimens that tested positive for influenza increased for clinical laboratories. A total of 21,564 specimens were tested at clinical laboratories, and 2,955 (13.7%) specimens tested positive for influenza. 2,702 (91.4%) specimens tested positive for Influenza A and 253 (8.6%) specimens tested positive for Influenza B. 952 specimens were tested at public health laboratories and 433 specimens tested positive. There were 405 (93.5%) positive Influenza A specimens and 28 (6.5%) positive Influenza B specimens. Influenza A/H3 was the most frequently identified influenza virus that was reported by public health labs with 333(82.2%). No viruses were resistant to oseltamivir, zanamivir, and peramivir. No influenza-associated pediatric deaths were reported to CDC during week 52. Between October 1, 2016 and December 31, 2016, 1,376 laboratory-confirmed influenza-associated hospitalizations were reported. Of the 1,376 hospitalizations, 87.7% were hospitalized for Influenza A virus. The overall hospitalization rate was 4.9 per 100,000 population. Adults aged ≥65 years (21.1 per 100,000 population) had the highest hospitalization rate. The proportion of people visiting their health care provider for influenza like illness (ILI) was 3.4%, which is above the national baseline of 2.2%. New Jersey, Puerto Rico and 9 states experienced high ILI activity. 10 states, including Pennsylvania, experienced moderate ILI activity. 5 states experienced low ILI activity. Delaware and 24 states experienced minimal ILI activity. Pennsylvania and 11 states reported widespread influenza activity. New Jersey and 27 states reported regional influenza activity. Delaware, Washington, D.C. and 9 states reported local influenza activity. Delaware had 40 laboratory-confirmed cases of flu. New Jersey reported 50 cases of Influenza A/H3N2 and 8 cases of Influenza B.

**All institutional outbreaks and hospitalized and fatal cases of influenza are to be reported to PDPH.**

Phone: (215) 685-6742 Fax: (215) 238-6947 Email: ACD@phila.gov Reporting requirements and forms are posted online at [hip.phila.gov](http://hip.phila.gov)