

# Philadelphia Department of Public Health Seasonal Influenza Surveillance Report

May 1, 2016 — May 7, 2016 (Week 18)

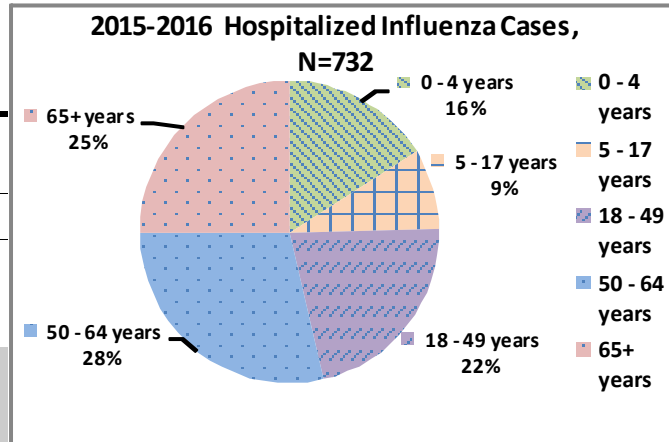
## Philadelphia Influenza Activity

Please note these data are provisional and subject to change.

For week 18, there were 8 influenza-associated hospitalizations were reported. Seven detections of influenza A occurred at local hospital laboratories, a decrease from the previous week. Influenza A/H1N1 has remained the dominant virus this season. Influenza-like illness (ILI) at emergency departments decreased slightly during week 16 while ILI activity at pediatric ambulatory clinics increased. To date, there have been 12 influenza outbreaks in long term care facilities. There have been 10 influenza-associated deaths reported this season. There were no influenza-associated deaths reported during week 18.

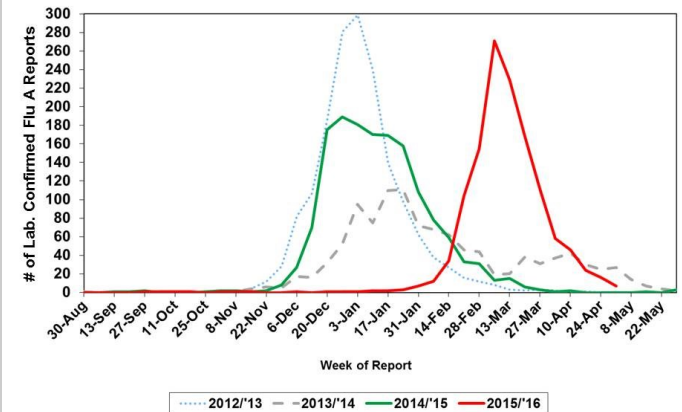
Surveillance type	Compared to week of 4/24–4/30	Compared to 3-yr seasonal* mean
Hospital ED Fever/flu visits	—	↓
Pediatric Clinics ILI	↑	—
Laboratory Influenza Surveillance	↓	↓

↑ = above 10 % of comparison group  
 — = equivalent to comparison group (-10% to +10%)  
 ↓ = below 10 % of comparison group  
 \* mean of 2010-'11, 2012-'13, and 2013-'14 flu seasons epidemic flu activity time period (late December—early May) ; NA = data not available/not received



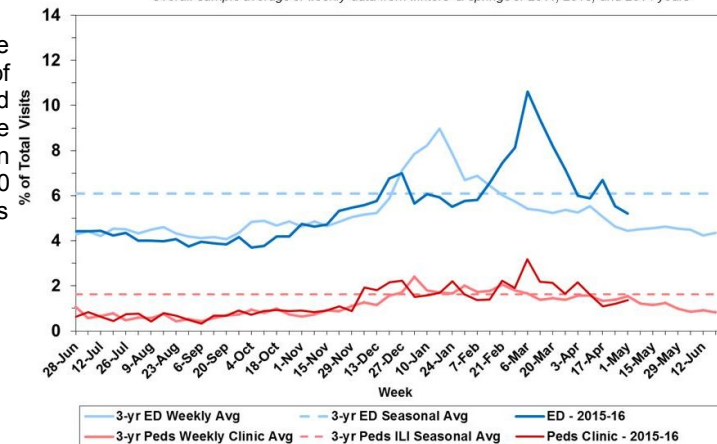
## Laboratory-Based Surveillance for Influenza A Philadelphia, 2012/2013 through 2015/2016 Seasons\*

\*Based on select hospital laboratories participating in surveillance across respiratory virus seasons



## Influenza-like Illness at Philadelphia Emergency Departments and Pediatric Ambulatory Clinics, 2015-16 Data Compared to 3-Year Historical Weekly\* and Seasonal\*\* Averages

\*Weekly average of values from 2011, 2013, and 2014 years  
 \*\*Overall sample average of weekly data from winters & springs of 2011, 2013, and 2014 years



## Pennsylvania Influenza Activity

During week 18 (May 1, 2016 - May 7, 2016), the number of influenza cases identified rose slightly across the state. There were 2,612 new cases of influenza reported (1,453 cases were reported the previous week 17). A total of 30,399 cases of influenza (positive by any test type) have been reported this season. Laboratory, hospital emergency department, and sentinel medical provider data all indicate decrease in influenza activity. The majority of cases (59.37%) have tested positive (via rapid test, PCR, or viral culture) for influenza A. To date, there have been 58 influenza-associated deaths in Pennsylvania (10 inside the Philadelphia city limits), one between the ages of 5– 17, five between the ages of 18-49, 20 between the ages 50-64, the other 32 were 65+. Influenza case activity throughout the state continues to be classified as regional for week 18, influenza activity was the highest in the southwestern part of the state.

## United States Influenza Activity

During week 18 (May 1-7, 2016), influenza activity decreased in the United States. The most frequently identified influenza virus type reported by public health laboratories during week 18 was influenza B. The percentage of respiratory specimens testing positive for influenza in clinical laboratories decreased. One human infection with a novel influenza A virus was reported. The proportion of deaths attributed to pneumonia and influenza (P&I) was below their system-specific epidemic threshold in both the NCHS Mortality Surveillance System and the 122 Cities Mortality Reporting System. Three influenza-associated pediatric deaths were reported. A cumulative rate for the season of 31.0 laboratory-confirmed influenza-associated hospitalizations per 100,000 population was reported. The proportion of outpatient visits for influenza-like illness (ILI) was 1.8%, which is below the national baseline of 2.1%. Three of 10 regions reported ILI at or above region-specific baseline levels. One state experienced high ILI activity; Puerto Rico experienced moderate ILI activity; two states experienced low ILI activity; New York City and 47 states experienced minimal ILI activity; and the District of Columbia had insufficient data. The geographic spread of influenza in Puerto Rico and three states was reported as widespread (Delaware); 12 states reported regional activity (New Jersey and Pennsylvania); the District of Columbia, Guam, and 20 states reported local activity; and the U.S. Virgin Islands and 15 states reported sporadic activity.

**All institutional outbreaks, hospitalized and fatal cases of influenza are to be reported to PDPH.**

Phone: (215) 685-6742 Fax: (215) 238-6947 Email: ACD@phila.gov

Reporting requirements and forms are posted online at [hip.phila.gov](http://hip.phila.gov)