

# Philadelphia Department of Public Health Seasonal Influenza Surveillance Report

December 13, 2015— December 19, 2015 (Week 50)

## Philadelphia Influenza Activity

Please note these data are provisional and subject to change.

For week 50, no hospitalized cases of influenza were reported, compared to five for the week prior. Influenza A appears to be the dominating virus this season thus far as hardly any reports of influenza B have been received. Influenza-like illnesses at local emergency departments have increased over the last 4 weeks. To date, there have been two flu outbreaks in long term care facilities.

Surveillance type	Compared to week of 12/6–12/12	Compared to 3-yr seasonal* mean
Hospital ED Fever/flu visits	—	—
Pediatric Clinics ILI	↓	↓
Laboratory Influenza Surveillance	↓	↓

↑ = above 10 % of comparison group

— = equivalent to comparison group (-10% to +10%)

↓ = below 10 % of comparison group

\* mean of 2010-'11, 2012-'13, and 2013-'14 flu seasons epidemic flu activity time period (late December—early May)

### Influenza Vaccine Reminders & Resources

#### Influenza Vaccine Updates

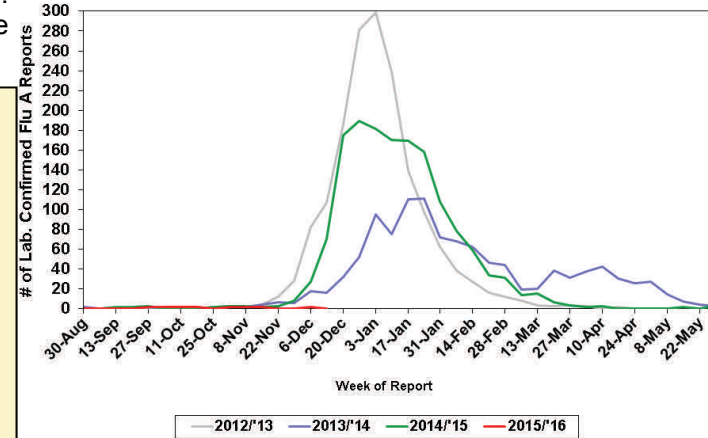
- Over 143.3 million doses of flu vaccine have been distributed nationwide
- It is not too late to receive the flu vaccine. Once administered, the flu vaccine takes approximately two weeks to offer protection

#### Select Influenza Resources

- Resources for promoting the influenza vaccine are available at: <http://www.cdc.gov/flu/freeresources/print.htm>
- Additional resources specific to influenza testing and treatment can also be found at: <https://hip.phila.gov/DiseaseControlGuidance/DiseasesConditions/Influenza>

## Laboratory-Based Surveillance for Influenza A Philadelphia, 2012/2013 through 2015/2016 Seasons\*

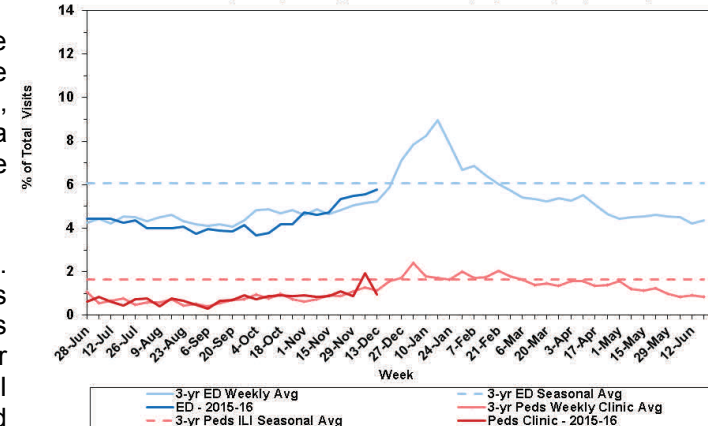
\*Based on select hospital laboratories participating in surveillance across respiratory virus seasons



## Influenza-like Illness at Philadelphia Emergency Departments and Pediatric Ambulatory Clinics, 2015-16 Data compared to 3-Year Historical Weekly\* and Seasonal\*\* Averages

\*Weekly average of values from 2011, 2013, and 2014 years

\*\*Overall sample average of weekly data from winters & springs of 2011, 2013, and 2014 years



## Pennsylvania Influenza Activity

Influenza activity for Pennsylvania for the week of December 13–19, 2015 took a modest increase. There was an increase in the weekly case count from the previous week 49 report with 63 new additional cases being reported. A total of 492 cases of influenza (positive by any test type) have been reported this season. The majority of cases (66%) have tested positive (via rapid test, PCR, or culture) for influenza A. To date, there have only been two influenza-associated deaths in Pennsylvania (outside of Philadelphia), one between the ages 50-64, the other 65+. Case activity throughout the state increased from sporadic to regional with activity being increased predominately in southeastern Pennsylvania.

## United States Influenza Activity

During week 50 (December 13 – December 19, 2015), influenza activity increased slightly in the United States. The most frequently identified influenza virus type reported by public health laboratories during week 50 was influenza A, with influenza A (H1N1)pdm09 viruses predominating. The percentage of respiratory specimens testing positive for influenza in clinical laboratories was low at 7.8%. The proportion of outpatient visits for influenza-like illness (ILI) was 2.2%, slightly above the national baseline of 2.1%. Four of 10 regions reported ILI at or above region-specific baseline levels. South Carolina experienced high ILI activity; Puerto Rico, Texas, and New Jersey experienced moderate ILI activity; New York City and three states experienced low ILI activity; 44 states experienced minimal ILI activity; and the District of Columbia had insufficient data. The geographic spread of influenza in Maryland, Pennsylvania, and five other states/territories was reported as regional; 15 states/territories reported local activity including New Jersey; the District of Columbia and 27 states reported sporadic activity; and four states reported no influenza activity including Delaware.

**All institutional outbreaks, hospitalized and fatal cases of influenza are to be reported to PDPH.**

Phone: (215) 685-6742

Fax: (215) 238-6947

Email: [ACD@phila.gov](mailto:ACD@phila.gov)