

Philadelphia Department of Public Health Seasonal Influenza Surveillance Report

December 6, 2015— December 12, 2015 (Week 49)

Philadelphia Influenza Activity

Please note these data are provisional and subject to change.

For week 49, five hospitalized cases of influenza were reported, compared to none for the week prior. All of the hospitalizations were due to influenza A. Influenza A appears to be the dominating virus this season thus far as hardly any reports of influenza B have been received. For the same time period, influenza-like illnesses at pediatric outpatient clinics increased. To date, there have been two flu outbreaks in long term care facilities.

Surveillance type	Compared to week of 11/29–12/5	Compared to 3-yr seasonal* mean
Hospital ED Fever/flu visits	—	↓
Pediatric Clinics ILI	↑	—
Laboratory Influenza Surveillance	↑	↓

↑ = above 10% of comparison group
 — = equivalent to comparison group (-10% to +10%)
 ↓ = below 10% of comparison group
 * mean of 2010-'11, 2012-'13, and 2013-'14 flu seasons epidemic flu activity time period (late December—early May)

Influenza Testing Recommendations

- Generally not required for uncomplicated cases of influenza-like illness
- rRT-PCR, viral culture, DFA or IFA recommended for:
 - ⇒ Hospitalized or fatal cases
 - ⇒ Patients with severe disease, suspected antiviral resistance, or suspected novel flu A infection
- Appropriate specimens include nasopharyngeal/oropharyngeal swabs, nasal aspirate or wash, or endotracheal aspirate or bronchoalveolar lavage fluid
- Keep specimens refrigerated and test within 72 hours
- Rapid influenza diagnostic tests (RIDT) have sub-optimal sensitivity. Negative tests may require further confirmatory testing. Regardless of RIDT test results, clinical judgment should be used to decide if treatment is appropriate.

Pennsylvania Influenza Activity

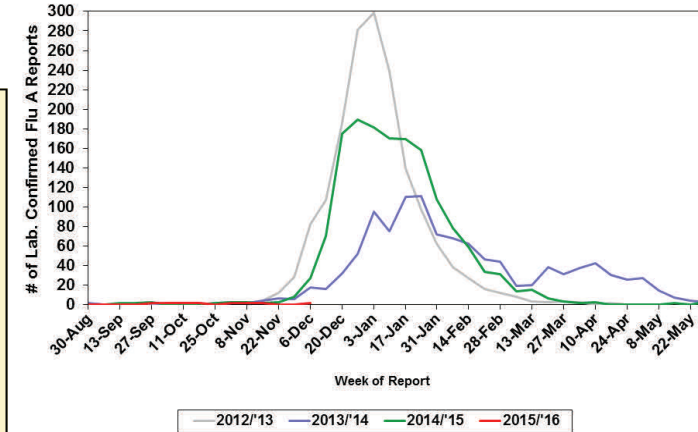
Influenza activity for Pennsylvania for the week of December 6 - 12, 2015 has remained minimal. There was a slight decline in the weekly case count from the previous week 48 report, only 45 new additional cases have been reported. A total of 428 cases of influenza (positive by any test type) have been reported this season. There have been a small number (8) of influenza cases (positive by rapid test, PCR, or culture) which have been placed in the undetermined type category statewide. To date, there have only been two influenza-associated deaths in Pennsylvania (outside of Philadelphia), one between the ages 50-64, the other 65+. Case activity throughout the state remains sporadic.

United States Influenza Activity

During week 49 (December 6 – December 12, 2015), influenza activity decreased in the United States. The most frequently identified influenza virus type reported by public health laboratories during week 49 was influenza A, with influenza A (H1N1)pdm09 viruses predominating. The percentage of respiratory specimens testing positive for influenza in clinical laboratories was low. One human infection with a novel influenza A virus was reported. No influenza-associated pediatric deaths were reported. The proportion of outpatient visits for influenza-like illness (ILI) was 1.9%, which is below the national baseline of 2.1%. Four of 10 regions reported ILI at or above region-specific baseline levels. One state experienced high ILI activity; Puerto Rico and one state experienced moderate ILI activity; New York City and two states experienced low ILI activity; 46 states experienced minimal ILI activity; and the District of Columbia had insufficient data. The geographic spread of influenza in Guam was reported as widespread; Puerto Rico and two states reported regional activity; 12 states reported local activity; the District of Columbia, the U.S. Virgin Islands, and 33 states reported sporadic activity; and three states reported no influenza activity. Surrounding states Delaware— reported no activity for the week and New Jersey reported local activity and moderate ILI levels.

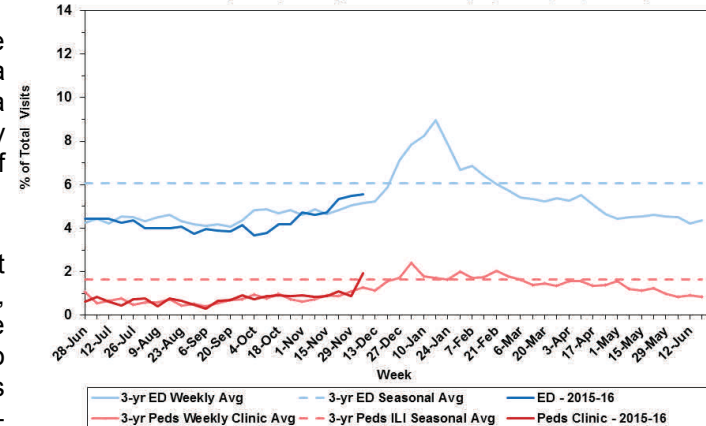
Laboratory-Based Surveillance for Influenza A Philadelphia, 2012/2013 through 2015/2016 Seasons*

*Based on select hospital laboratories participating in surveillance across respiratory virus seasons



Influenza-like Illness at Philadelphia Emergency Departments and Pediatric Ambulatory Clinics, 2015-16 Data compared to 3-Year Historical Weekly* and Seasonal** Averages

*Weekly average of values from 2011, 2013, and 2014 years
 **Overall sample average of weekly data from winters & springs of 2011, 2013, and 2014 years



All institutional outbreaks, hospitalized and fatal cases of influenza are to be reported to PDPH.

Phone: (215) 685-6742

Fax: (215) 238-6947

Email: ACD@phila.gov