

Philadelphia Department of Public Health Seasonal Influenza Surveillance Report

November 22—28, 2015 (Week 47)

Philadelphia Influenza Activity

Please note these data are provisional and subject to change.

For Week 47, influenza activity in Philadelphia is very low currently as detections of influenza in respiratory specimens have been in the single digits among select hospital laboratories over the last eight weeks. The same is true for reports of hospitalizations due to influenza. However, influenza-like illnesses have slowly risen at local emergency departments throughout November. Since September, there have only been five reports of influenza-associated hospitalizations with polymerase chain reaction (PCR) confirmed influenza infection received from local hospitals.

Surveillance type	Compared to week of 11/15–11/21	Compared to 3-yr seasonal* mean
Hospital ED Fever/flu visits	—	—
Pediatric Clinics ILI	—	—
Laboratory Influenza Surveillance	—	↓

Antiviral Resistance & Treatment Recommendations

The majority of recently circulating influenza viruses are susceptible to the neuraminidase inhibitor antiviral medications, oseltamivir, zanamivir, and peramivir; however, rare sporadic instances of oseltamivir-resistant and peramivir-resistant influenza A (H1N1)pdm09 and oseltamivir-resistant influenza A (H3N2) viruses have been detected worldwide.

Antiviral treatment as early as possible is recommended for patients with confirmed or suspected influenza who have severe, complicated, or progressive illness; who require hospitalization; or who are at high risk for serious influenza-related complications. Additional information on recommendations for treatment and chemoprophylaxis of influenza virus infection with antiviral agents is available at <http://www.cdc.gov/flu/antivirals/index.htm>.

↑ = above 10 % of comparison group
 — = equivalent to comparison group (-10% to +10%)
 ↓ = below 10 % of comparison group
 * mean of 2010-'11, 2012-'13, and 2013-'14 flu seasons epidemic flu activity time period (December—March)

Pennsylvania Influenza Activity

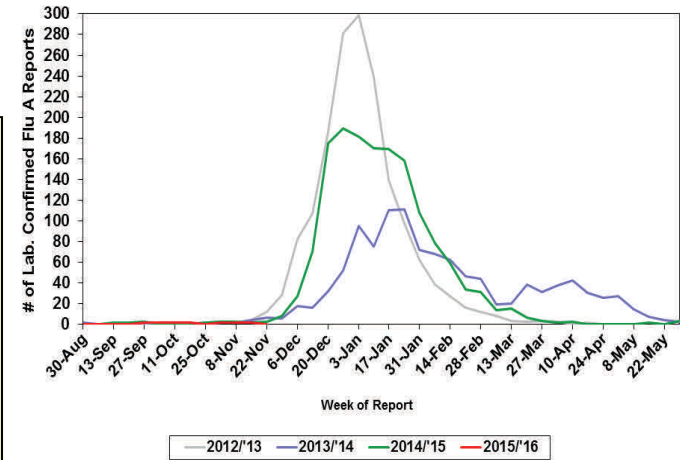
Influenza activity for Pennsylvania for the week of November 22-28, 2015 is minimal, the weekly case count did decline from the previous week 46. A total of 334 cases of influenza (positive by any test type) have been reported this season. There have been a small number (3) of influenza cases (positive by rapid test, PCR, or culture) which have been placed in the undetermined type category statewide. To date, there has only been one influenza-associated death in Pennsylvania (outside of Philadelphia), between the ages 50-64.

United States Influenza Activity

During week 47 (November 22-28, 2015), influenza activity increased slightly, but still remained predominately low in the United States. The most frequently identified influenza virus type reported by public health laboratories in week 47 was influenza A viruses, with influenza A (H3) viruses predominating. The percentage of respiratory specimens testing positive for influenza in clinical laboratories is low. No influenza-associated pediatric deaths were reported to CDC during week 47. A total of two influenza-associated pediatric deaths have been reported during the 2015-2016 season. The proportion of outpatient visits for influenza-like illness (ILI) was 1.9%, which is below the national baseline of 2.1%. Three of 10 regions reported ILI at or above region-specific baseline levels. Puerto Rico and two states experienced moderate ILI activity; four states experienced low ILI activity; New York City and 44 states experienced minimal ILI activity; and the District of Columbia had insufficient data. The geographic spread of influenza in Guam was reported as widespread; Puerto Rico reported regional activity; seven states reported local activity; the District of Columbia, the U.S. Virgin Islands, and 38 states reported sporadic activity; and five states reported no influenza activity.

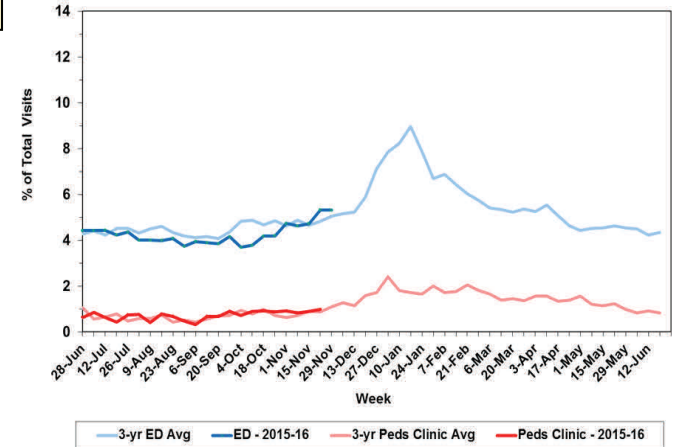
Laboratory-Based Surveillance for Influenza A Philadelphia, 2012/2013 through 2015/2016 Seasons*

*Based on select hospital laboratories participating in surveillance across respiratory virus seasons



Influenza-like Illness at Philadelphia Emergency Departments and Pediatric Ambulatory Clinics, 2014-15 Data compared to 3-Year Historical Averages*

*Average of 2011, 2013, and 2014 years



All institutional outbreaks, hospitalized and fatal cases of influenza are to be reported to PDPH.

Phone: (215) 685-6742 Fax: (215) 238-6947 Email: ACD@phila.gov

Reporting requirements and forms are posted online at hip.phila.gov