



Philadelphia Department of Public Health Seasonal Influenza Surveillance Report April 12 – April 18, 2015 (Week 15)

Philadelphia Influenza Activity

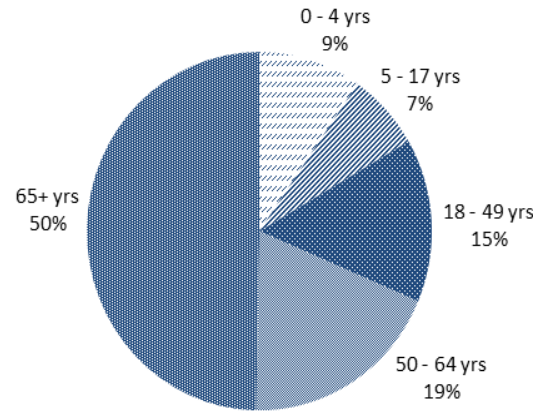
Please note these data are provisional and subject to change.

Influenza activity in Philadelphia continues to decrease as 3 influenza-associated hospitalizations from local hospitals were reported for the week of April 12–April 18, 2015. During the same week, only two laboratory-confirmed influenza A and 7 lab-confirmed influenza B samples were detected at our 6 participating clinical laboratories. Influenza-like illness (ILI) activity at emergency departments and pediatric outpatient clinics increased slightly compared to the prior week. Forty-six outbreaks of influenza have been reported in long term care facilities. Two influenza-associated pediatric mortalities occurred in Philadelphia, one in week 4 and one in week 5. *Due to low vaccine effectiveness this season, providers are reminded to treat all hospitalized and high-risk patients suspected to have influenza with antiviral medicine. We also ask clinicians to report any parotitis associated with influenza throughout the season.*

| Surveillance type | Compared to week of 4/5–4/11 | Compared to 3-yr seasonal* mean |
|-----------------------------------|------------------------------|---------------------------------|
| Hospital ED Fever/flu visits | ↑ | ↓ |
| Pediatric Clinics ILI | — | — |
| Laboratory Influenza Surveillance | ↑ | ↓ |

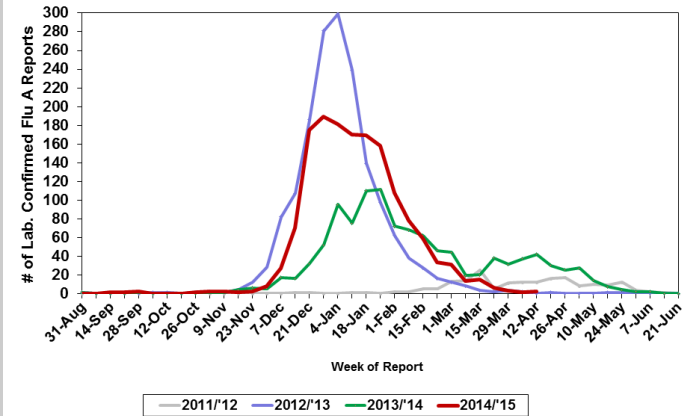
↑ = above 10 % of comparison group
 — = equivalent to comparison group (-10% to +10%)
 ↓ = below 10 % of comparison group
 * mean of 2007-'08, 2008-'09, and 2010-'11 flu seasons

Philadelphia Hospitalized Influenza Cases by Age, N=972



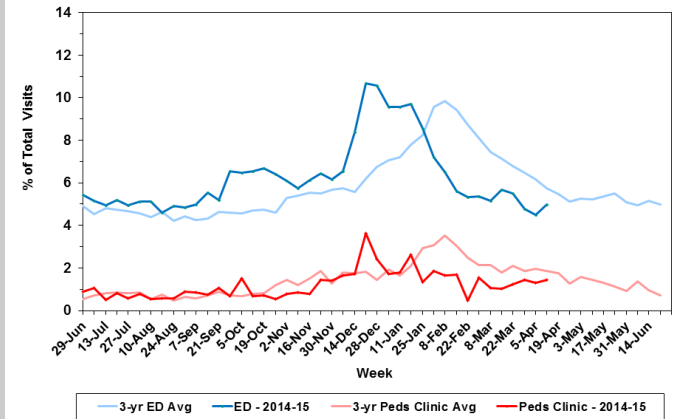
Laboratory-Based Surveillance for Influenza A: Philadelphia, 2011/2012 through 2014/2015 Seasons*

*Based on select hospital/laboratories participating in surveillance across respiratory virus seasons



Influenza-like Illness at Philadelphia Emergency Departments and Pediatric Ambulatory Clinics, 2014-15 Data compared to 3-Year Historical Averages*

*Average of 2007, 2008, and 2011 years



Pennsylvania

Influenza activity was categorized as sporadic during week 15 in Pennsylvania. A total of 54,193 cases of influenza (positive by any test type) have been reported as of April 18, 2015. A majority (89.6%) of the cases sub-typed at the state public health lab thus far this season have been associated with influenza A/H3, 5.0% have been classified as B/ Yamagata, and 5.4% have been classified as other sub-types. A total of 215 influenza-associated deaths have occurred in Pennsylvania. Of the 215 influenza-associated deaths in PA, three were among the ages of 0-18, eight were among the ages of 19-49, 21 were among the ages of 50-64, and 183 were among people greater than 65 years of age. Twenty-two deaths with positive influenza tests have been reported in Philadelphia as of April 18, 2015.

United States

During week 15 influenza activity continued to decrease in the U.S. Nationwide, 1.4% of outpatient visits were due to ILI, which is below the national baseline (2.0%). Widespread activity was reported by three states, including New York. Guam and ten states reported regional influenza activity. Local activity was reported by the District of Columbia and 18 states, including New Jersey. Puerto Rico, the U.S. Virgin Islands and 17 states, including Delaware, reported sporadic activity. Two states reported no influenza activity. Of the 10,457 specimens tested and reported by WHO/NREVSS collaborating laboratories during week 15, 795 (7.6%) were positive for influenza, of which 94 (11.8%) were influenza A and 701 (88.2%) were influenza B. Of the 94 positive influenza A specimens, 6 (6.4%) were categorized as 2009 H1N1, while 22 (23.4%) were H3. Subtyping was not performed on the other 66 (70.2%) specimens. In the U.S., the vast majority of recently circulating influenza viruses have been susceptible to the neuraminidase inhibitor antiviral medications; however, rare sporadic instances of oseltamivir-resistant A(H1N1)pdm09 and A(H3N2) viruses have been detected worldwide. Of all deaths reported during week 15, 6.7% were due to pneumonia and influenza, which is below the epidemic threshold for week 15 (7.0%). A total of 128 pediatric deaths have been reported for the 2014-2015 season from New York City and 38 states.

All institutional outbreaks and hospitalized and fatal cases of influenza are to be reported to PDPH.

Phone: (215) 685-6742 Fax: (215) 238-6947 Email: ACD@phila.gov

Reporting requirements and forms are posted online at hip.phila.gov