



Philadelphia Department of Public Health Seasonal Influenza Surveillance Report April 5 – April 11, 2015 (Week 14)

Philadelphia Influenza Activity

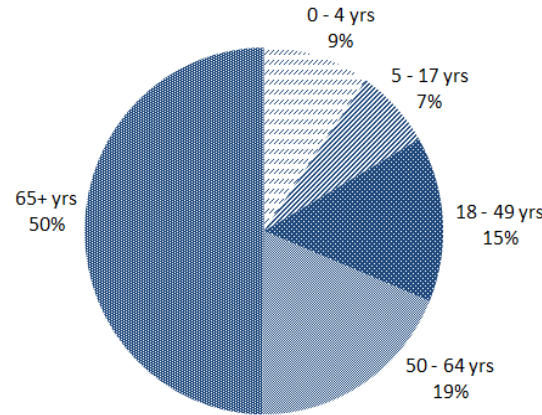
Please note these data are provisional and subject to change.

Influenza activity in Philadelphia continues to decrease as 12 influenza-associated hospitalizations from local hospitals were reported for the week of April 5–April 11, 2015. During the same week, only one laboratory-confirmed influenza A and 10 lab-confirmed influenza B samples were detected at our 6 participating clinical laboratories. Influenza-like illness (ILI) activity at emergency departments and ILI activity at pediatric outpatient clinics declined slightly compared to the prior week. Forty-six outbreaks of influenza have been reported in long term care facilities. Two influenza-associated pediatric mortalities occurred in Philadelphia, one in week 4 and one in week 5. *Due to low vaccine effectiveness this season, providers are reminded to treat all hospitalized and high-risk patients suspected to have influenza with antiviral medicine. We also ask clinicians to report any parotitis associated with influenza throughout the season.*

Surveillance type	Compared to week of 3/29–4/4	Compared to 3-yr seasonal* mean
Hospital ED Fever/flu visits	—	↓
Pediatric Clinics ILI	—	—
Laboratory Influenza Surveillance	↓	↓

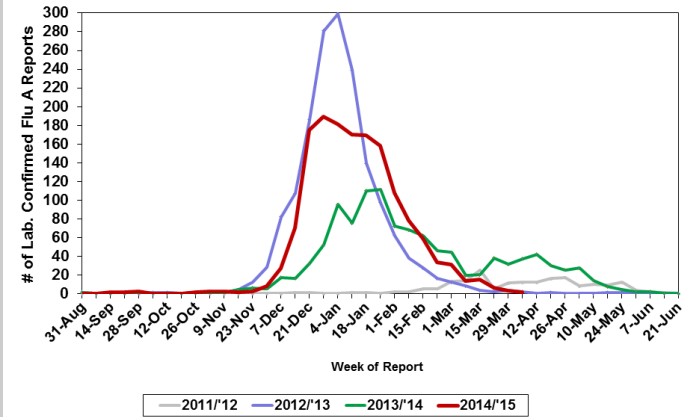
↑ = above 10 % of comparison group
 — = equivalent to comparison group (-10% to +10%)
 ↓ = below 10 % of comparison group
 * mean of 2007-'08, 2008-'09, and 2010-'11 flu seasons

Philadelphia Hospitalized Influenza Cases by Age, N=969



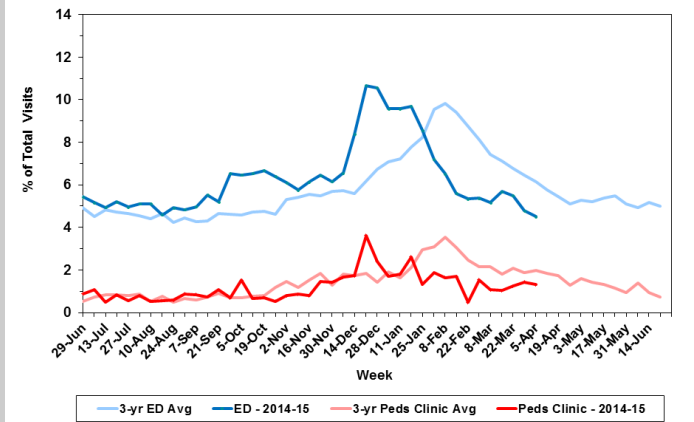
Laboratory-Based Surveillance for Influenza A: Philadelphia, 2011/2012 through 2014/2015 Seasons*

*Based on select hospital/laboratories participating in surveillance across respiratory virus seasons



Influenza-like Illness at Philadelphia Emergency Departments and Pediatric Ambulatory Clinics, 2014-15 Data compared to 3-Year Historical Averages*

*Average of 2007, 2008, and 2011 years



Pennsylvania

Influenza activity was categorized as sporadic during week 14 in Pennsylvania. A total of 53,567 cases of influenza (positive by any test type) have been reported as of April 11, 2015. A majority (91.0%) of the cases sub-typed at the state public health lab thus far this season have been associated with influenza A/H3, 4.7% have been classified as B/ Yamagata, and 4.3% have been classified as other sub-types. A total of 212 influenza-associated deaths have occurred in Pennsylvania. Of the 212 influenza-associated deaths in PA, three were among the ages of 0-18, six were among the ages of 19-49, 21 were among the ages of 50-64, and 182 were among people greater than 65 years of age. Twenty-one deaths with positive influenza tests have been reported in Philadelphia as of April 11, 2015.

United States

During week 14 influenza activity continued to decrease in the U.S. Nationwide, 1.8% of outpatient visits were due to ILI, which is below the national baseline (2.0%). Widespread activity was reported by three states, including New York. Guam and fourteen states reported regional influenza activity, including New Jersey. Local activity was reported by the District of Columbia and 19 states, including Delaware. Puerto Rico, the U.S. Virgin Islands and fourteen states reported sporadic activity. Of the 11,189 specimens tested and reported by WHO/NREVSS collaborating laboratories during week 14, 1,076 (9.6%) were positive for influenza, of which 139 (12.9%) were influenza A and 937 (87.1%) were influenza B. Of the 139 positive influenza A specimens, 3 (2.2%) were categorized as 2009 H1N1, while 46 (33.1%) were H3. Subtyping was not performed on the other 90 (64.7%) specimens. In the U.S., the vast majority of recently circulating influenza viruses have been susceptible to the neuraminidase inhibitor antiviral medications; however, rare sporadic instances of oseltamivir-resistant A(H1N1)pdm09 and A(H3N2) viruses have been detected worldwide. Of all deaths reported during week 14, 6.1% were due to pneumonia and influenza, which is below the epidemic threshold for week 14 (7.0%). A total of 125 pediatric deaths have been reported for the 2014-2015 season from New York City and 38 states.

All institutional outbreaks and hospitalized and fatal cases of influenza are to be reported to PDPH.

Phone: (215) 685-6742 Fax: (215) 238-6947 Email: ACD@phila.gov

Reporting requirements and forms are posted online at hip.phila.gov